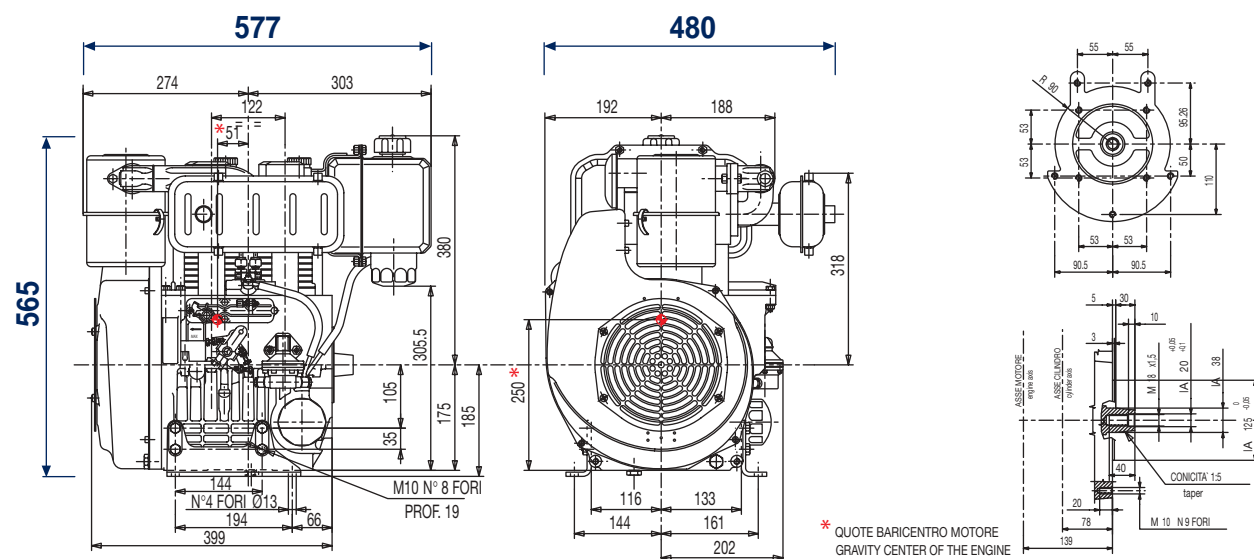


Technical drawings *



* More specific dimensions are available on www.lombardini.it (see table at the bottom of the page)

Standard equipment

electric starter with 12V alternator
black paint (varnish) on sheet metal parts ?
accelerator remote control
oil bath air filter
external oil filter
oil pressure switch
combined manifold and exhaust muffler
engine feet
power take-off on crankshaft
panel board
fuel feed pump
counter-clockwise rotation on power take-off side
fuel tank with filter
automatic mechanical fuel supplement
use, maintenance, and spare parts booklet

Accessories

different guards according to use
diverse power alternators
compression release
flanges
detached dry air filter
external fuel filter
clutches
diverse flywheels for clutches
hydraulic pump adapters
various capacity tanks
mufflers and exhaust pipes
controls
pulleys
varnishing (painting) ?

Files for this product available on www.lombardini.it

Data sheet	12LD477DS.PDF
Owner manual	12LD477OM.PDF
Service manual	12LD477SM.PDF
Technical drawing	12LD477TD.DWG
Power curve	12LD477PC.PDF

LOMBARDINI RESERVES THE RIGHT TO MAKE MODIFICATIONS WITHOUT PRIOR NOTICE

mod. 51041/1

- 2 cylinders
- 954 cm³
- 17 kW/23.1 HP
- 3600 r.p.m.
- Nm. 55@2100

Homologation

- ECE R 24-03 ▲

Construction

- 4-stroke air cooled diesel engine
- direct injection
- flywheel fan air cooling
- mechanical fuel feeding supplement
- forced lubrication with oil pump
- full flow oil filter with external cartridge
- automatic extra fuel starting device
- torque regulator
- centrifugal speed governor
- crankcase in die-cast aluminium
- electric starting
- counter-clockwise rotation (viewed from power take-off side)
- aluminium alloy independent heads
- re-borable independent cast-iron cylinders
- power take-off on crankshaft



Applications

- Dumper
- Vibrating Roller
- Generating Set
- Welding Set
- High pressure cleaner
- Hydraulic power pack
- Agricultural pump
- Two-wheel tractor



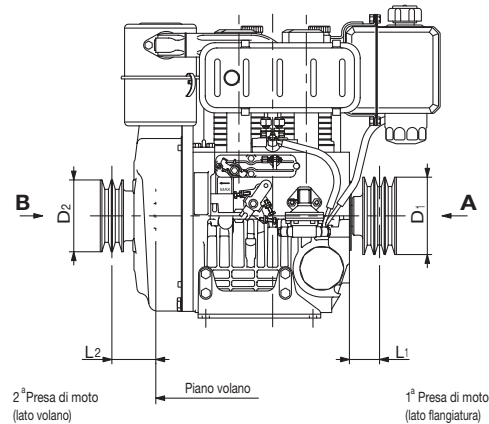
Via Cav. del Lavoro Adelmo Lombardini, 2
42100 Reggio Emilia - Italia
Tel. ++39 0522.3891 - Fax ++39 0522.389503
www.lombardini.it

SERIE 12LD

Specifications

Cylinders	N.	2
Displacement	cm ³	954
Bore	mm	90
Stroke	mm	75
Compression ratio		19:1
Rating kW/HP	N (80/1269/CEE) ISO 1585	17/23.1
	NB ISO 3046 IFN	15.7/21.4
	NA ISO 3046 ICXN	14.5/19.7
Max. torque	Nm.	55@2100
Max. torque 3 P.T.O.	Nm.	25.0
Counterclockwise rotation		
Engine speed - 3 P.T.O. ratio		1:0.89
Minimum idling speed r.p.m.		1000
Fuel tank capacity	l	7
Oil consumption	kg/h.	0.011
Oil sump capacity	l	3
Min. allowable oil pressure	bar	0.8
Max. allowable tilt for short time operation (peak values)		25° (35°)
Combustion air required at 3600/3000 r.p.m.	l/min.	1500/1220
Cooling air required at 3600/3000 r.p.m.	l/min.	15800/13200
Dry weight	kg	78
Recommended battery	V/Ah	12/55
Axial load (continuous)	kg	100
(intermittent)	kg	350

Minimum pulley diameters for belt drive



$$D_1 \text{ (mm)} \geq 220 [78 + L_1 \text{ (mm)}] \frac{N \text{ (kW)}}{n \text{ (RPM)}}$$

$$D_2 \text{ (mm)} \geq 196 [150 + L_2 \text{ (mm)}] \frac{N \text{ (kW)}}{n \text{ (RPM)}}$$

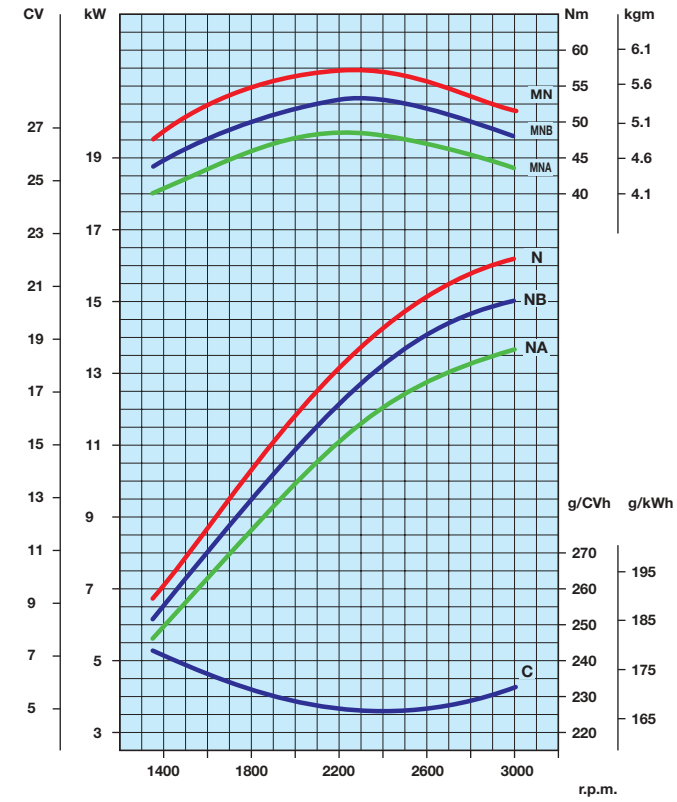
Max. allowable axial load in both direction A-B = 350 kg



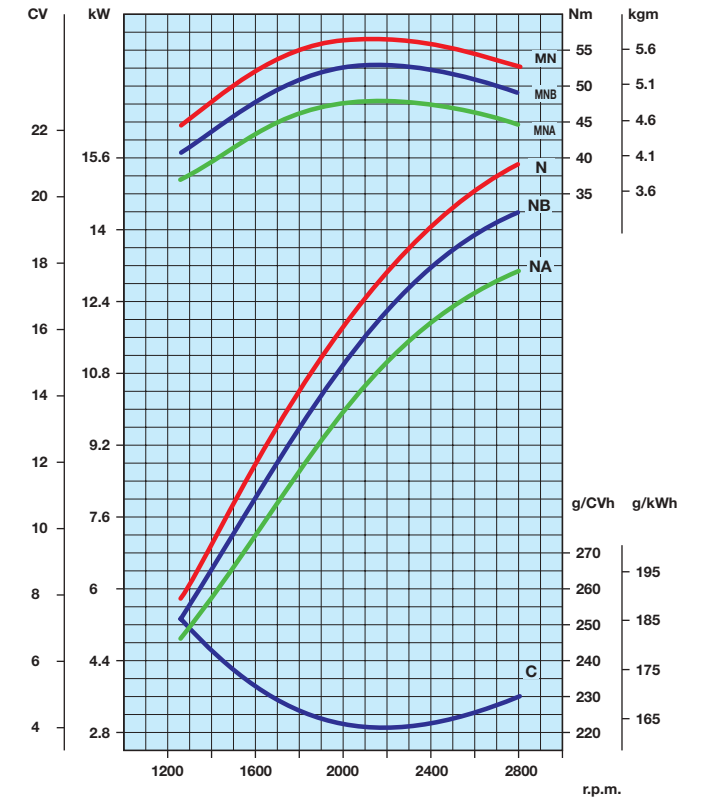
SERIE 12LD

Curves

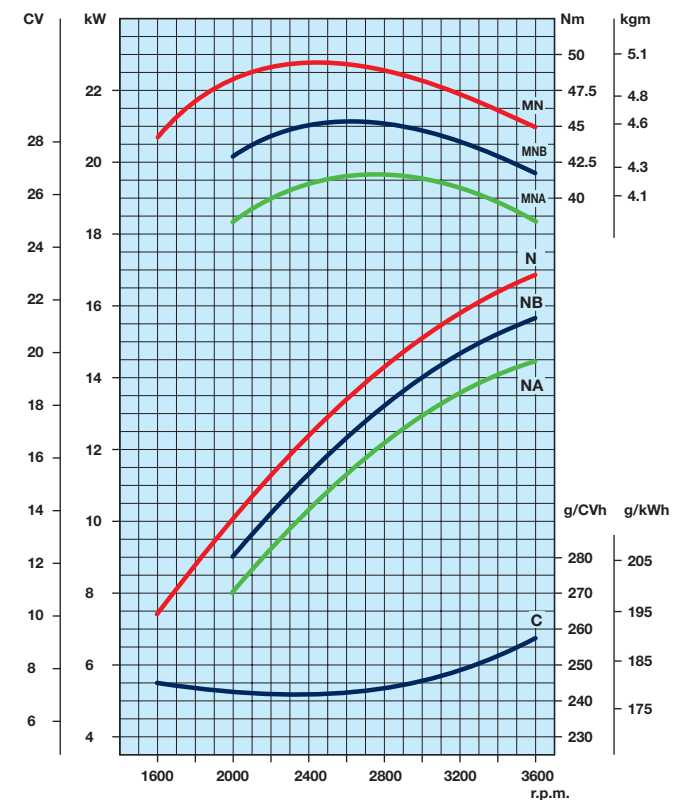
12LD 477/2 B1 @ 3000 r.p.m. ▲



12LD 477/2 B2 @ 2800 r.p.m. ▲



12LD 477/2 @ 3600 r.p.m.



- N** Power curve - 80/1269/CEE - ISO 1585 -
- NB** Power curve - ISO 3046/1 - IFN -
- NA** Power curve - ISO 3046/1 - ICXN -
- MN** Torque curve - (N curve)
- MB (B curve - MA (A curve)**
- C** Specific fuel consumption - (NB curve)

Power for gen set or stationary running

Engine power kW

r.p.m.	Intermittent (NB)	Continuous (NA)
3600	15.7	14.5
3000	14.9	13.5
1800	9.0	8.1
1500	7.7	7.0