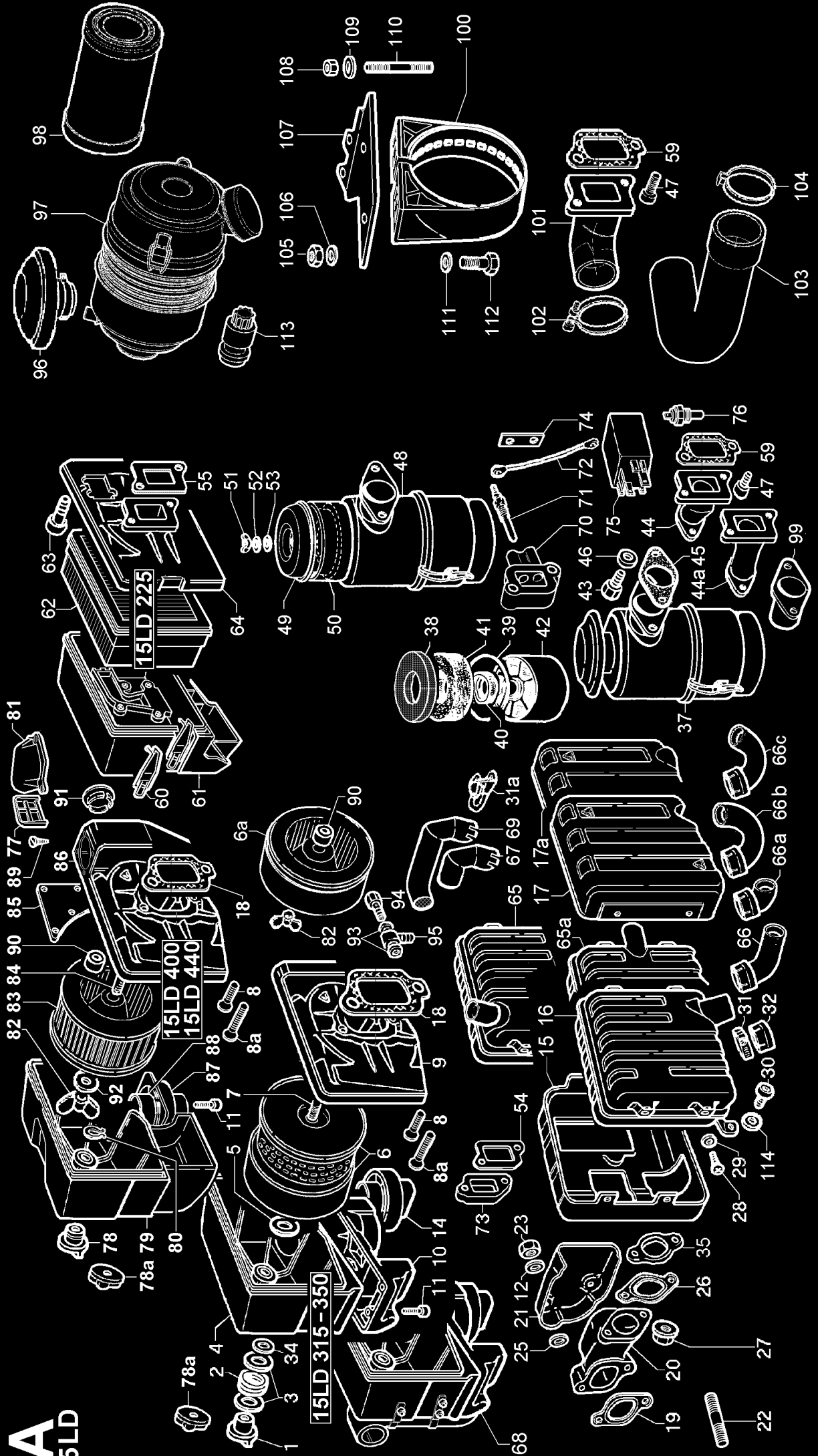
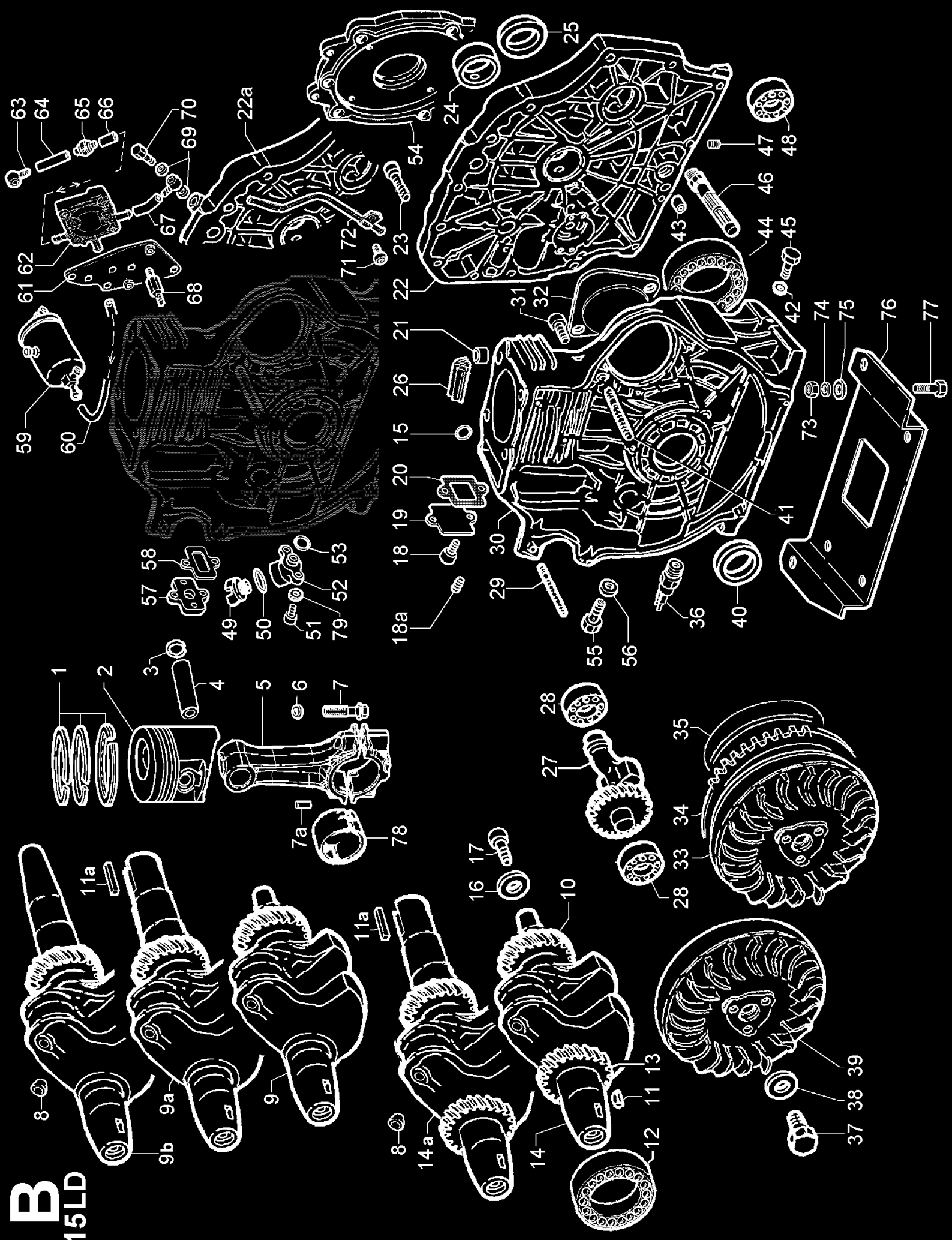


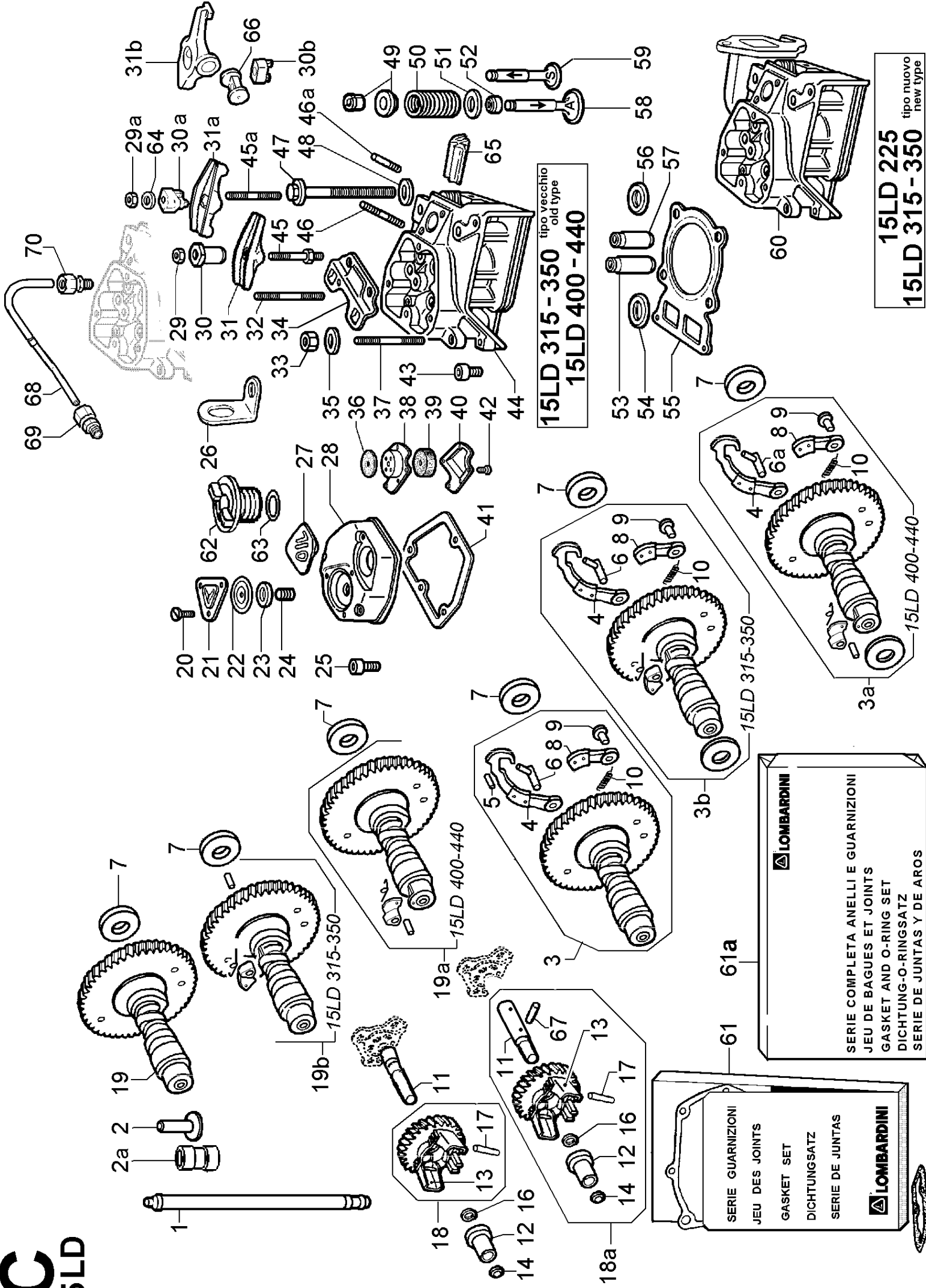
A 15LD



B 15LD



C 15LD



15LD 315 - 350 tipo vecchio
old type
15LD 400 - 440

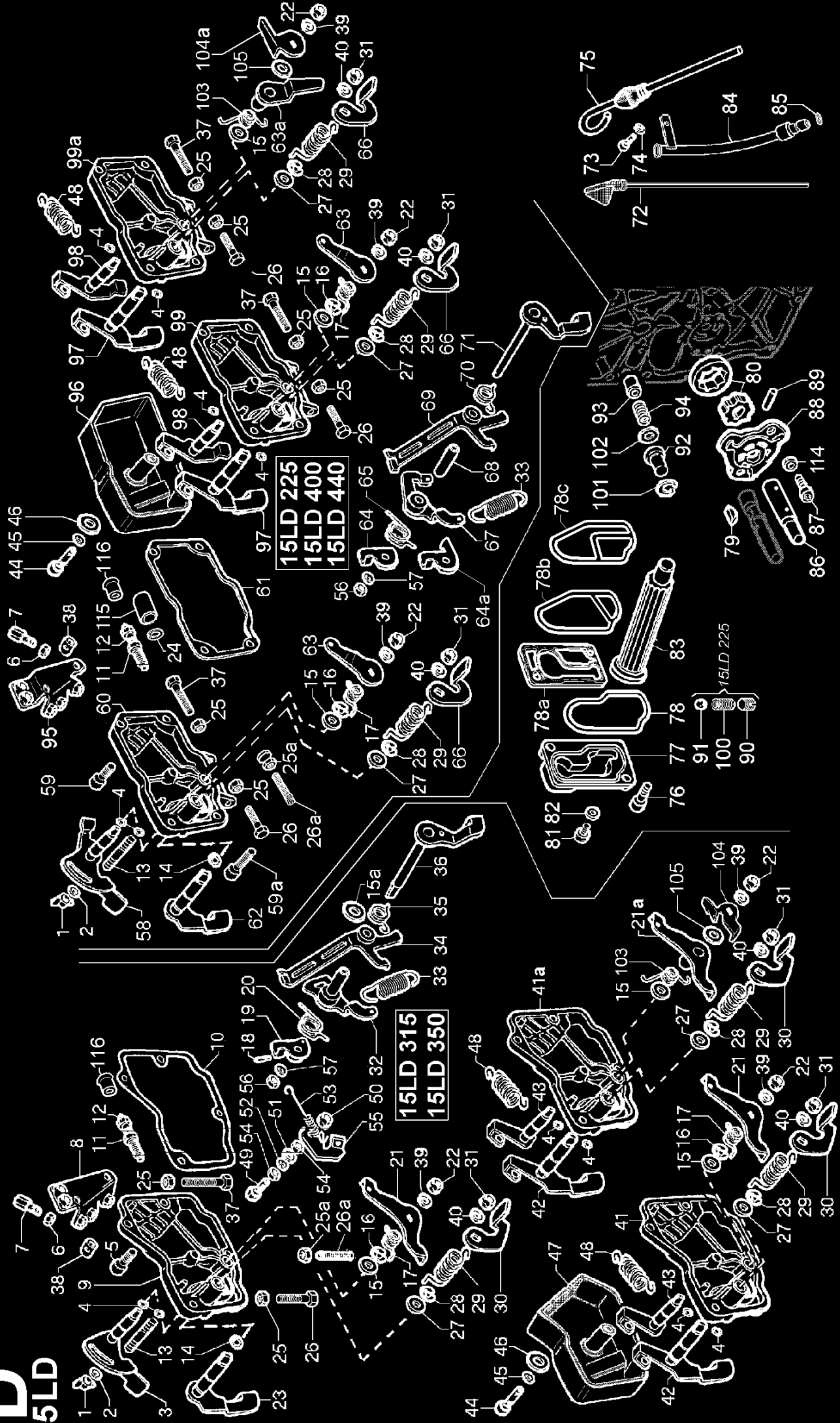
LOMBARDINI
SERIE COMPLETA ANELLI E GUARNIZIONI
JEU DE BAGUES ET JOINTS
GASKET AND O-RING SET
DICHTUNG-O-RINGSATZ
SERIE DE JUNTAS Y DE AROS

LOMBARDINI
SERIE GUARNIZIONI
JEU DES JOINTS
GASKET SET
DICHTUNGSATZ
SERIE DE JUNTAS

15LD 225 tipo nuovo
new type
15LD 315 - 350

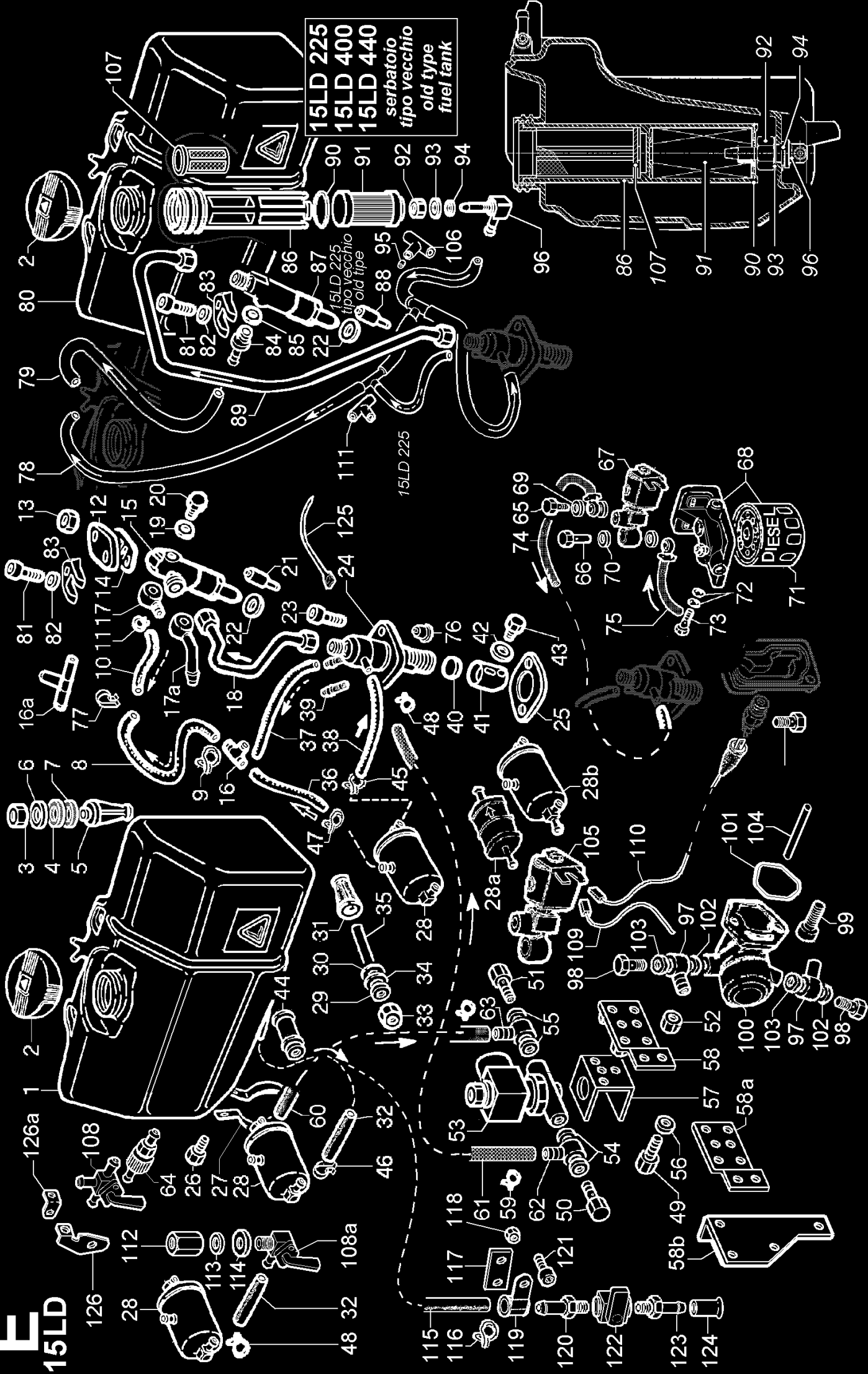
D

15LD



E

15LD

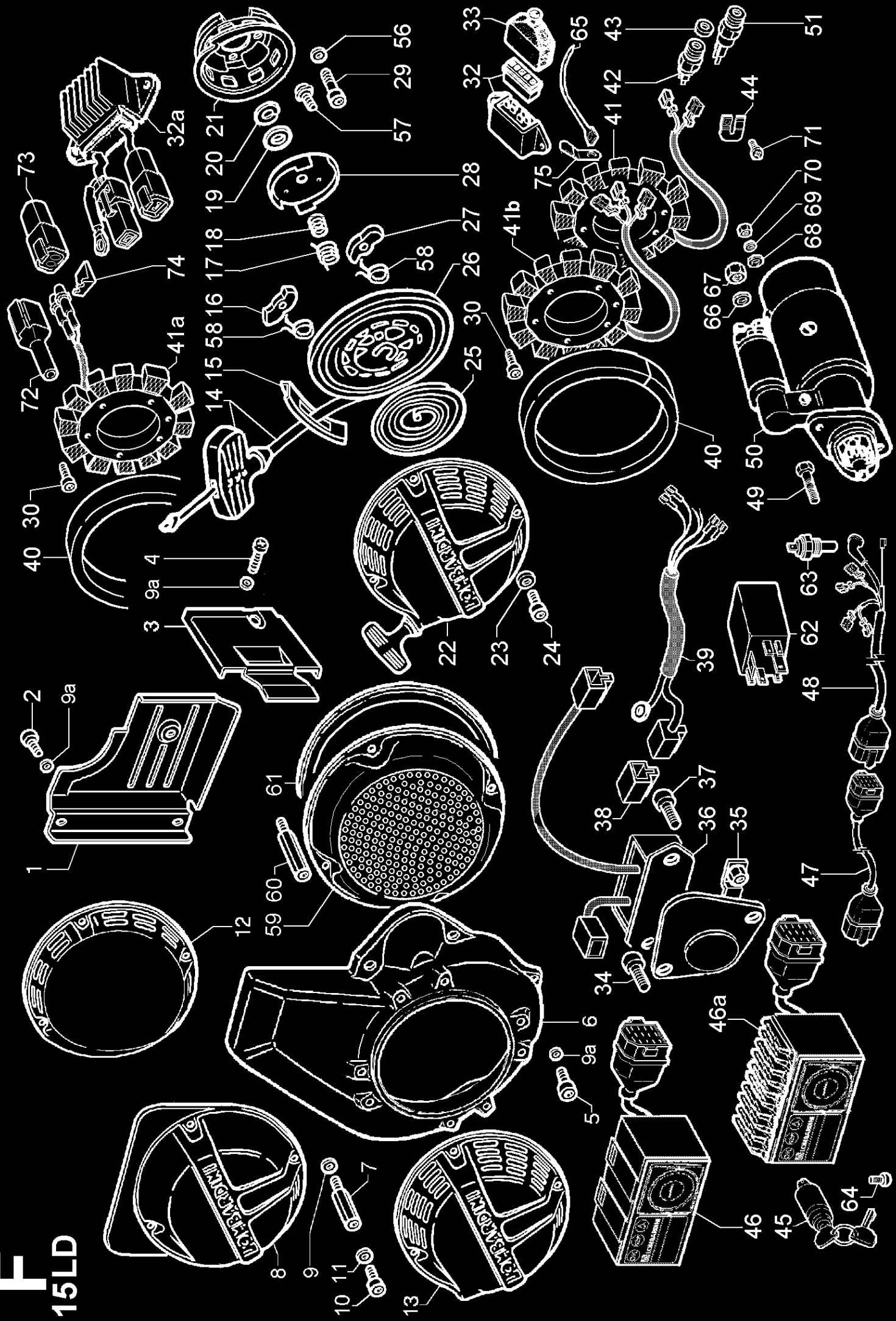


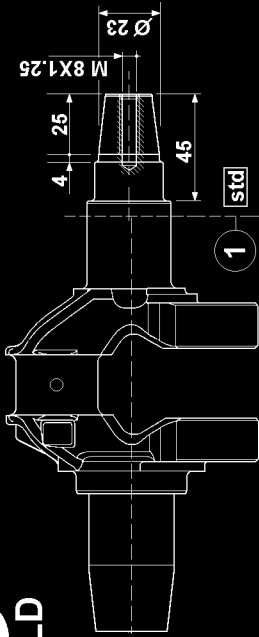
15LD 225
15LD 400
15LD 440
serbatoio
tipo vecchio
old type
fuel tank

15LD 225
tipo vecchio
old type

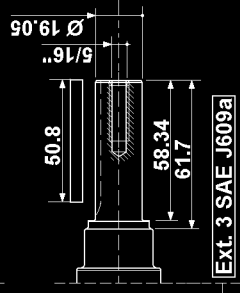


F 15LD

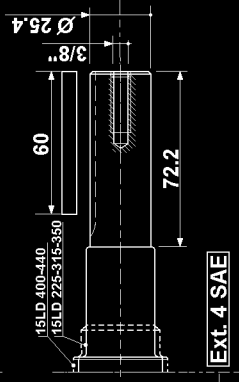




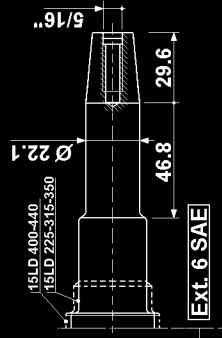
1



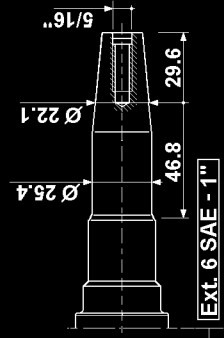
2



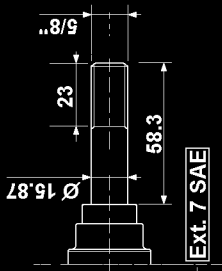
3



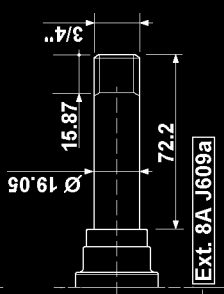
4



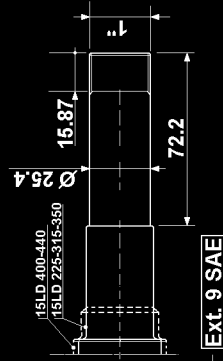
4a



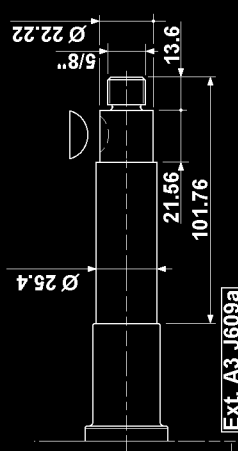
5



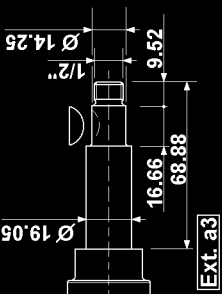
6



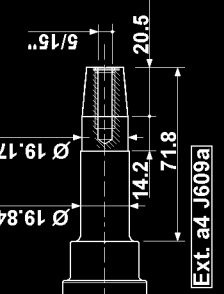
7



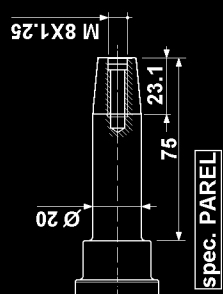
8



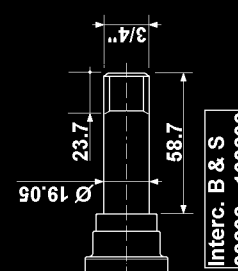
9



10



11



12

Ext. a3

Ext. a4 J609a

spec. PAREL

Interc. B & S
80232 - 130232

Ext. 7 SAE

Ext. 8A J609a

Ext. 9 SAE

Ext. A3 J609a

Ext. 3 SAE J609a

Ext. 4 SAE

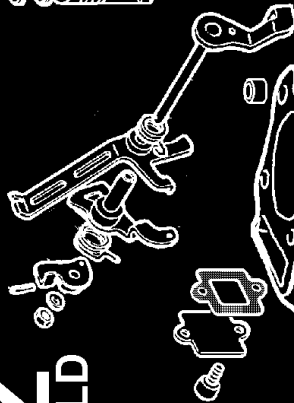
Ext. 6 SAE

Ext. 6 SAE - 1"

15LD 400-440
15LD 225-315-350

15LD 400-440
15LD 225-315-350

Z
15LD



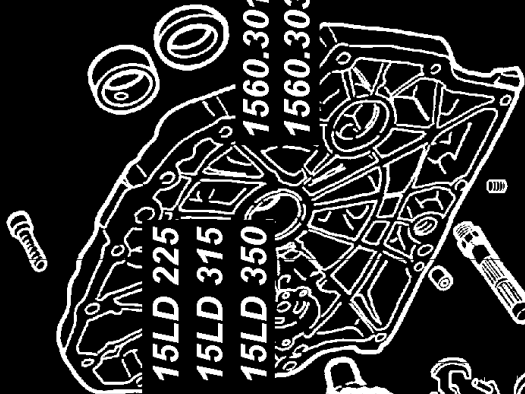
1560.279 std 15LD 225

1560.275 std 15LD 315

1560.278 std 15LD 350

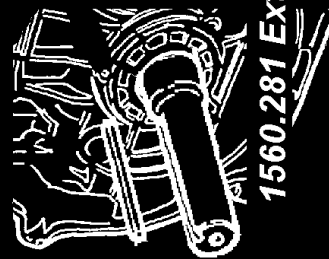
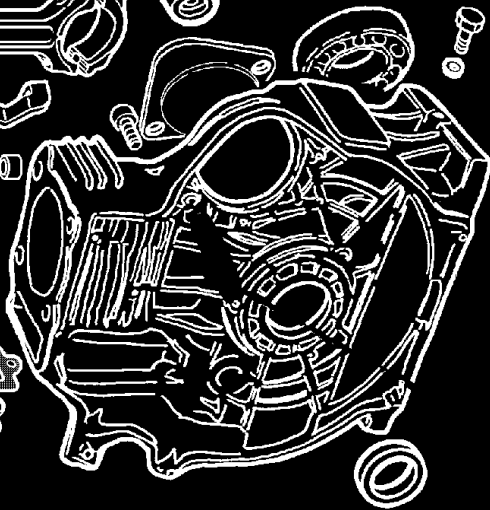
1560.301 std 15LD 400

1560.303 std 15LD 440

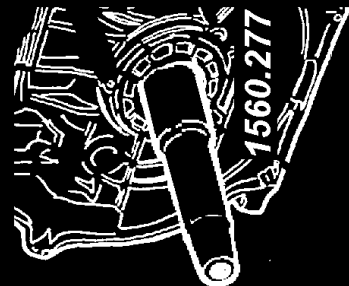


1560.280 std 15LD 225
1560.276 std 15LD 315
1560.302 std 15LD 400
1560.304 std 15LD 440

con albero equilibratore
with equalizer shaft



1560.281 Ext 3 15LD 225



1560.277 Ext 6 15LD 315